

MEN



Tall sizes available in select colors: Anthracite, Black, Cool Grey, Game Royal, Gym Blue, Navy, University Red, Valor Blue, White

The best-selling Nike polo just got better. Still engineered from soft, stretchable micro pique fabric, the Nike Dri-FIT Micro Pique 2.0 Polo is now 5 styles strong. It delivers unparalleled comfort with Dri-FIT moisture management technology and features updated design lines and fit. Flat knit collar and three-button placket. Rolled-forward shoulder seams, open hem sleeves and open hem. White or black pearlized buttons selected to complement the shirt color. Contrast Swoosh logo is embroidered on the left sleeve. Made of 4.3-ounce, 100% polyester Dri-FIT fabric.

CARE INSTRUCTIONS

Machine Wash Cold. Wash Inside Out. Wash With Like Colors. Do Not Use Softeners. Do Not Use Bleach. Tumble Dry Low. Do Not Iron. Do Not Dry Clean.

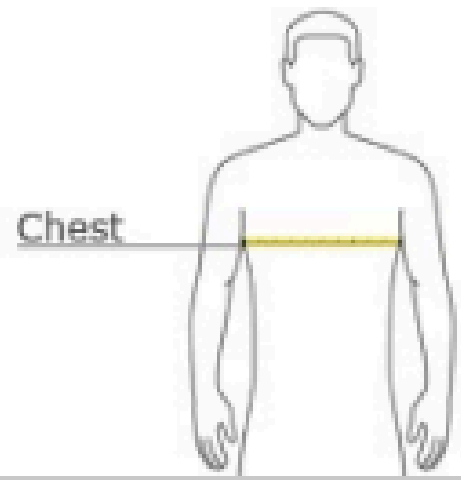


front



back

HOW TO MEASURE



CHEST WIDTH

Measure under the arm and around the fullest part of the chest with arms down, keeping tape horizontal.



SIZE CHART

	XS	S	M	L	XL	2XL	3XL	4XL	LT	XLT	2XLT	3XLT	4XLT
Chest	32-35	35-37 1/2	37 1/2-41	41-44	44-48 1/2	48 1/2 -53 1/2	53 1/2 - 58	58-63	41-44	44-48 1/2	48 1/2-53 1/2	53 1/2-58	58-63

WOMEN



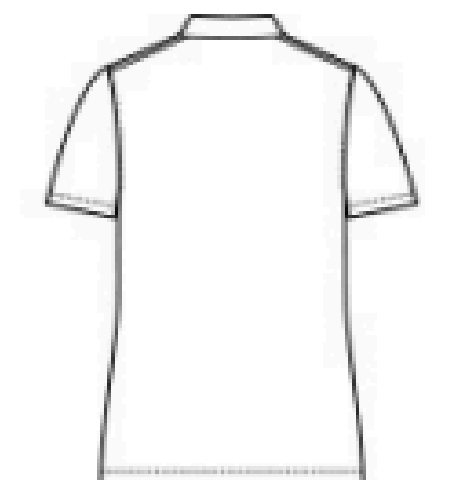
The best-selling Nike polo just got better. Still engineered from soft, stretchable micro pique fabric, the Nike Dri-FIT Micro Pique 2.0 Polo is now 5 styles strong. It delivers unparalleled comfort with Dri-FIT moisture management technology and features updated design lines and fit. Tailored for a feminine fit with a self-fabric collar, open neckline and side vents. Rolled-forward shoulder seams, open hem sleeves and open hem. Contrast Swoosh logo is embroidered on the left sleeve. Made of 4.3-ounce, 100% polyester Dri-FIT fabric.

CARE INSTRUCTIONS

Machine Wash Cold. Wash Inside Out. Wash With Like Colors. Do Not Use Softeners. Do Not Use Bleach. Tumble Dry Low. Do Not Iron. Do Not Dry Clean.

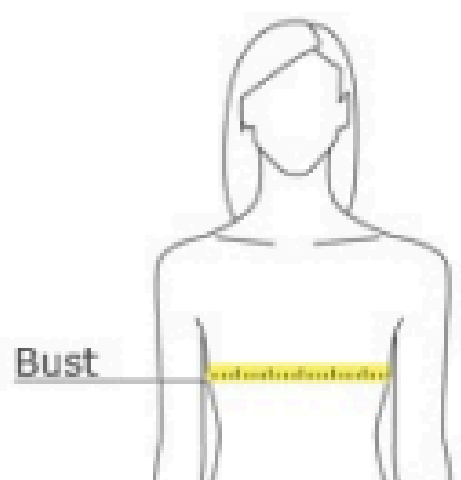


front



back

HOW TO MEASURE



BUST

Measure under the arm and around the fullest part of the bust with arms down, keeping tape horizontal.



SIZE CHART

	S	M	L	XL	2XL
Size	4/6	8/10	12/14	16/18	20/22
Bust	32 1/2-35 1/2	35 1/2 - 38	38-41	41-44 1/2	44 1/2 - 48 1/2



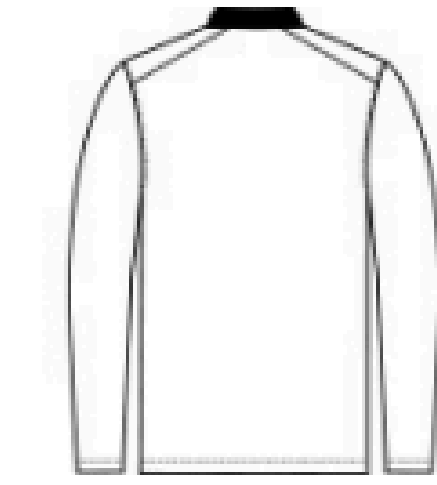
The best-selling Nike polo just got better. Still engineered from soft, stretchable micro pique fabric, the Nike Dri-FIT Micro Pique 2.0 Polo is now 5 styles strong. It delivers unparalleled comfort with Dri-FIT moisture management technology and features updated design lines and fit. Flat knit collar and three-button placket. Rolled-forward shoulder seams, open hem sleeves and open hem. White or black pearlized buttons selected to complement the shirt color. Contrast Sw oosh logo is embroidered on the left sleeve. Made of 4.3-ounce, 100% polyester Dri-FIT fabric.

CARE INSTRUCTIONS

Machine Wash Cold. Wash Inside Out. Wash With Like Colors. Do Not Use Softeners. Do Not Use Bleach. Tumble Dry Low. Do Not Iron. Do Not Dry Clean.



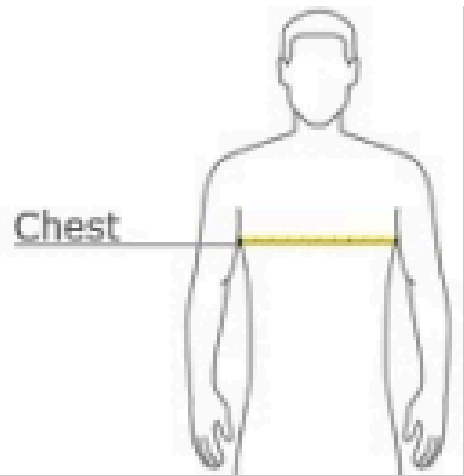
front



back

M
E
N

HOW TO MEASURE



CHEST WIDTH

Measure under the arm and around the fullest part of the chest with arms down n, keeping tape horizontal.



SIZE CHART

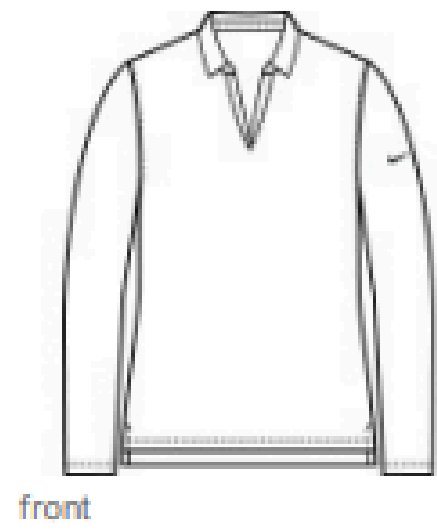
	XS	S	M	L	XL	2XL	3XL	4XL
Chest	32-35	35-37 1/2	37 1/2-41	41-44	44-48 1/2	48 1/2 -53 1/2	53 1/2 - 58	58-63



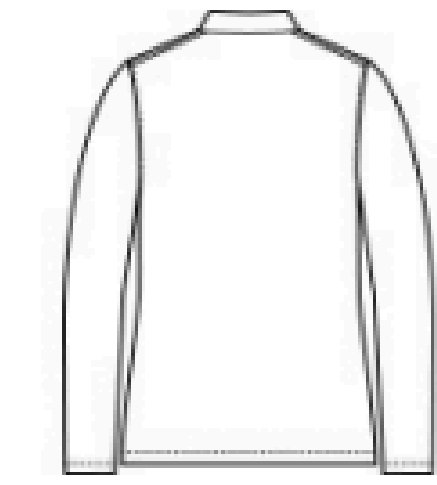
The best-selling Nike polo just got better. Still engineered from soft, stretchable micro pique fabric, the Nike Dri-FIT Micro Pique 2.0 Polo is now 5 styles strong. It delivers unparalleled comfort with Dri-FIT moisture management technology and features updated design lines and fit. Tailored for a feminine fit with a self-fabric collar, open neckline, longer length, high-low hem and side vents. Rolled-forward shoulder seams, open hem sleeves and open hem. Contrast Sw oosh logo is embroidered on the left sleeve. Made of 4.3-ounce, 100% polyester Dri-FIT fabric.

CARE INSTRUCTIONS

Machine Wash Cold. Wash Inside Out. Wash With Like Colors. Do Not Use Softeners. Do Not Use Bleach. Tumble Dry Low. Do Not Iron. Do Not Dry Clean.



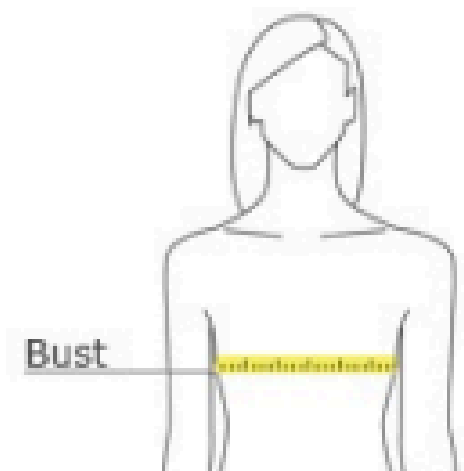
front



back

W
O
M
E
N

HOW TO MEASURE



BUST

Measure under the arm and around the fullest part of the bust with arms down n, keeping tape horizontal.



SIZE CHART

	S	M	L	XL	2XL
Size	4/6	8/10	12/14	16/18	20/22
Bust	32 1/2-35 1/2	35 1/2 - 38	38-41	41-44 1/2	44 1/2 - 48 1/2